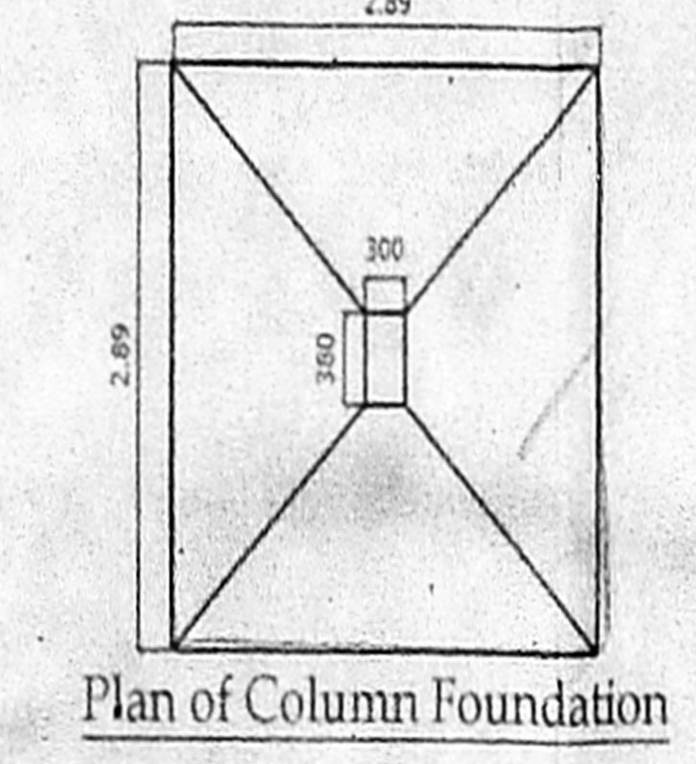
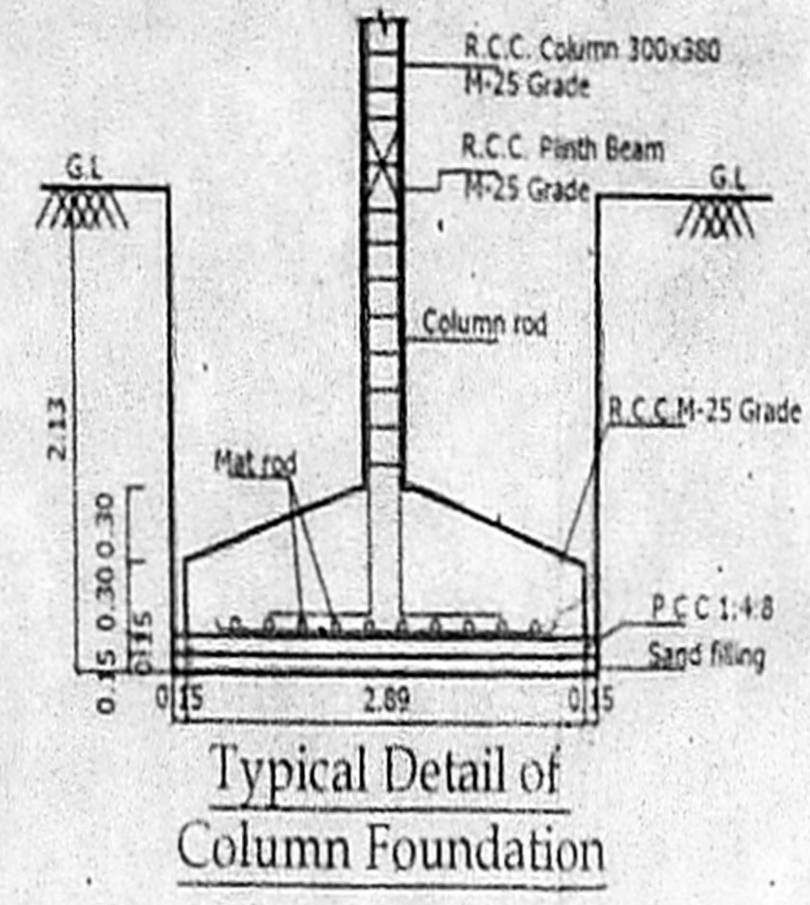
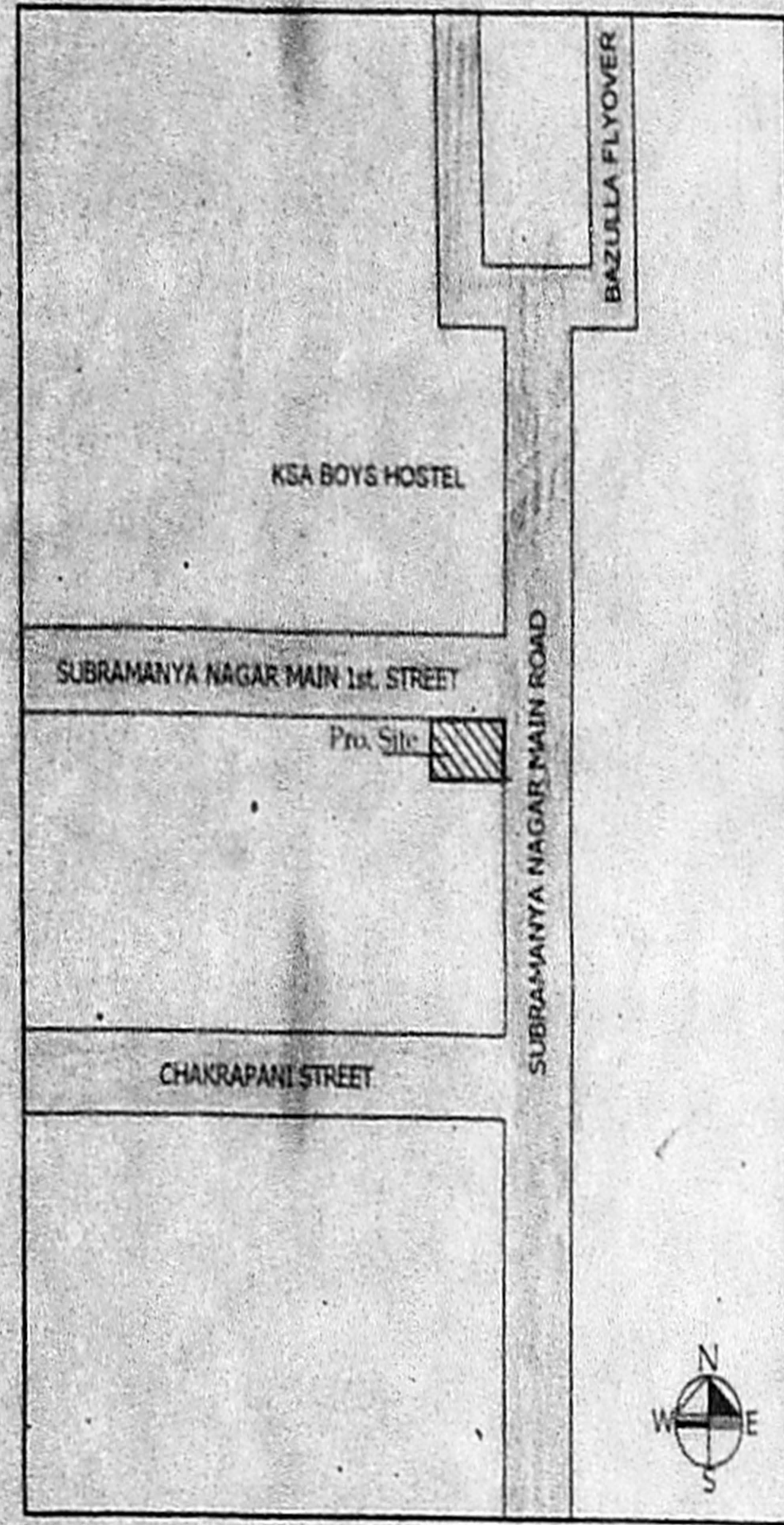
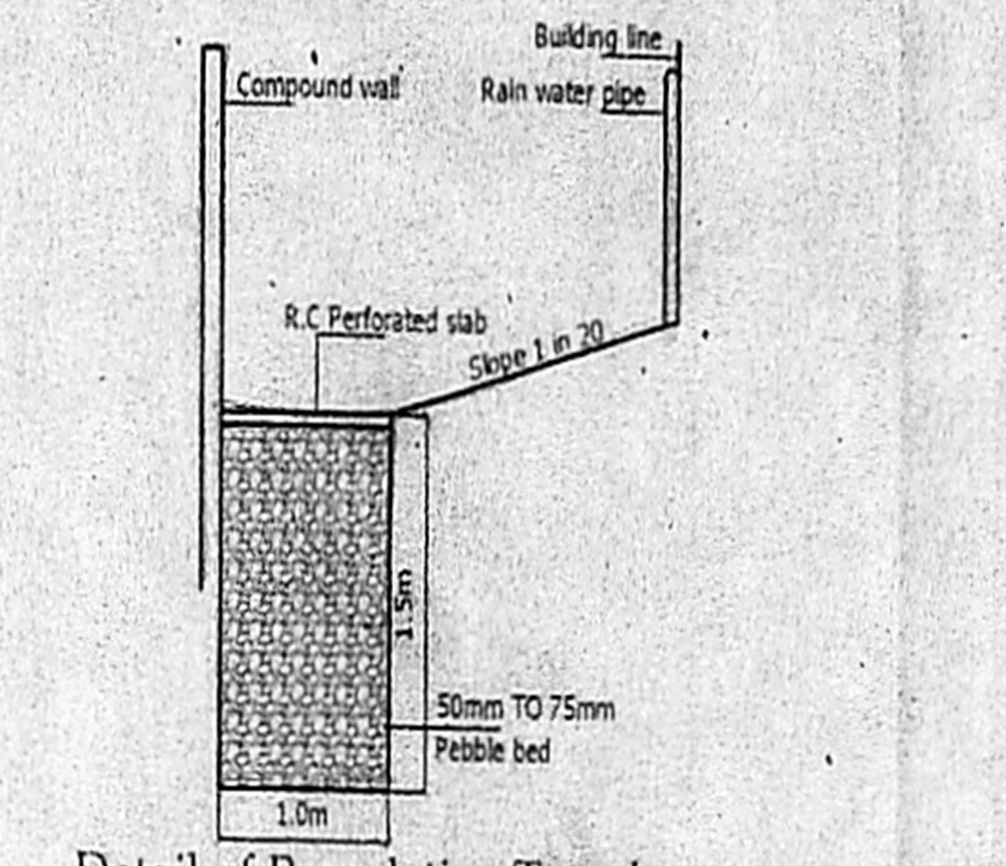
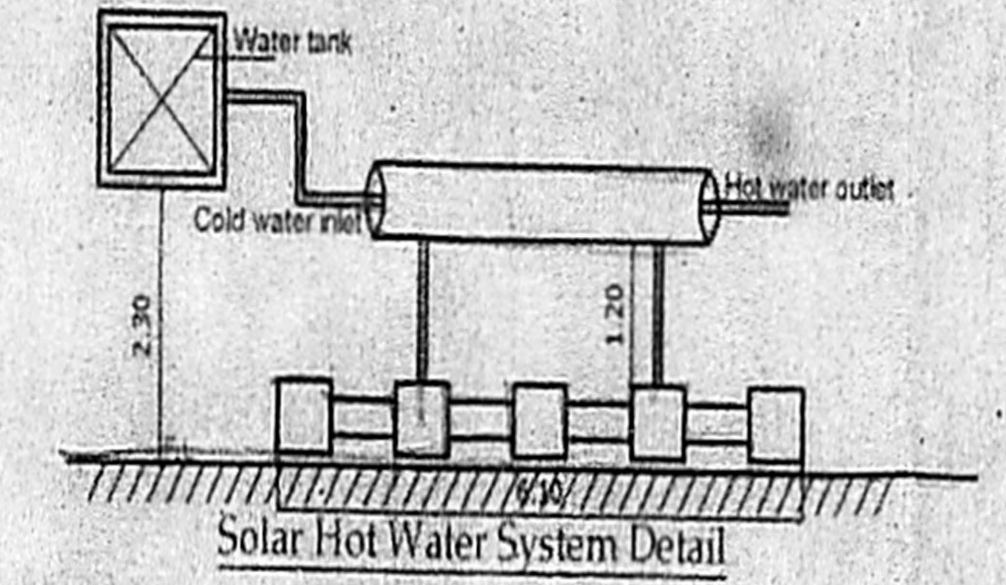
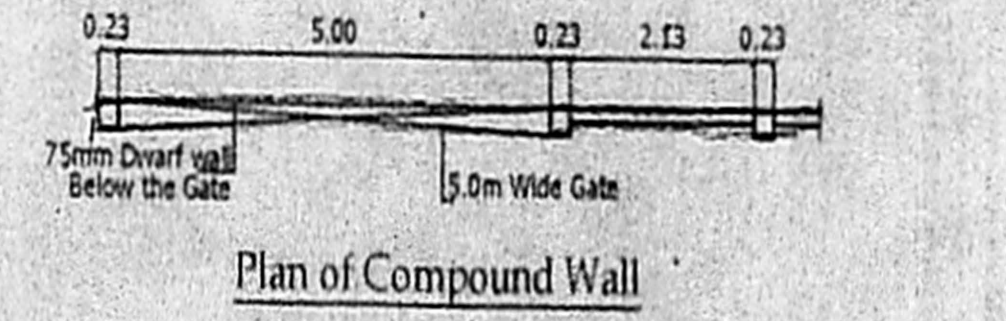
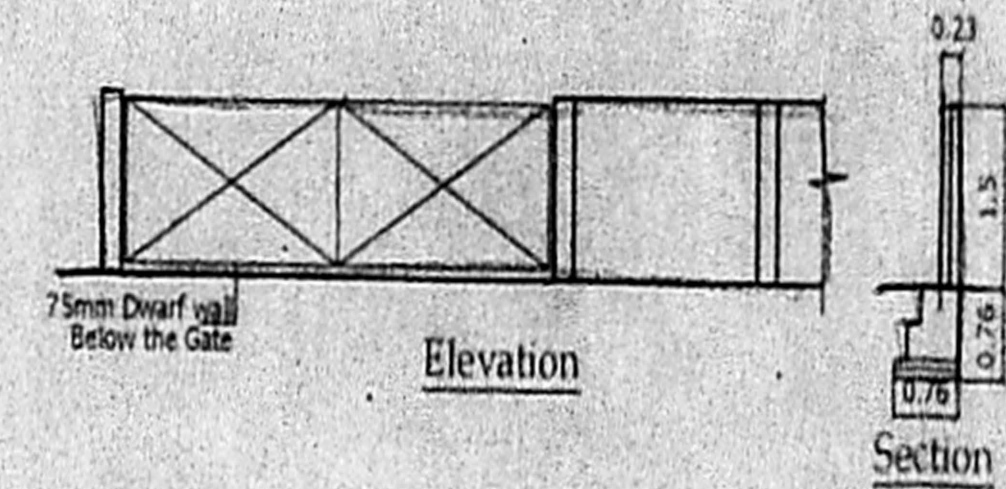
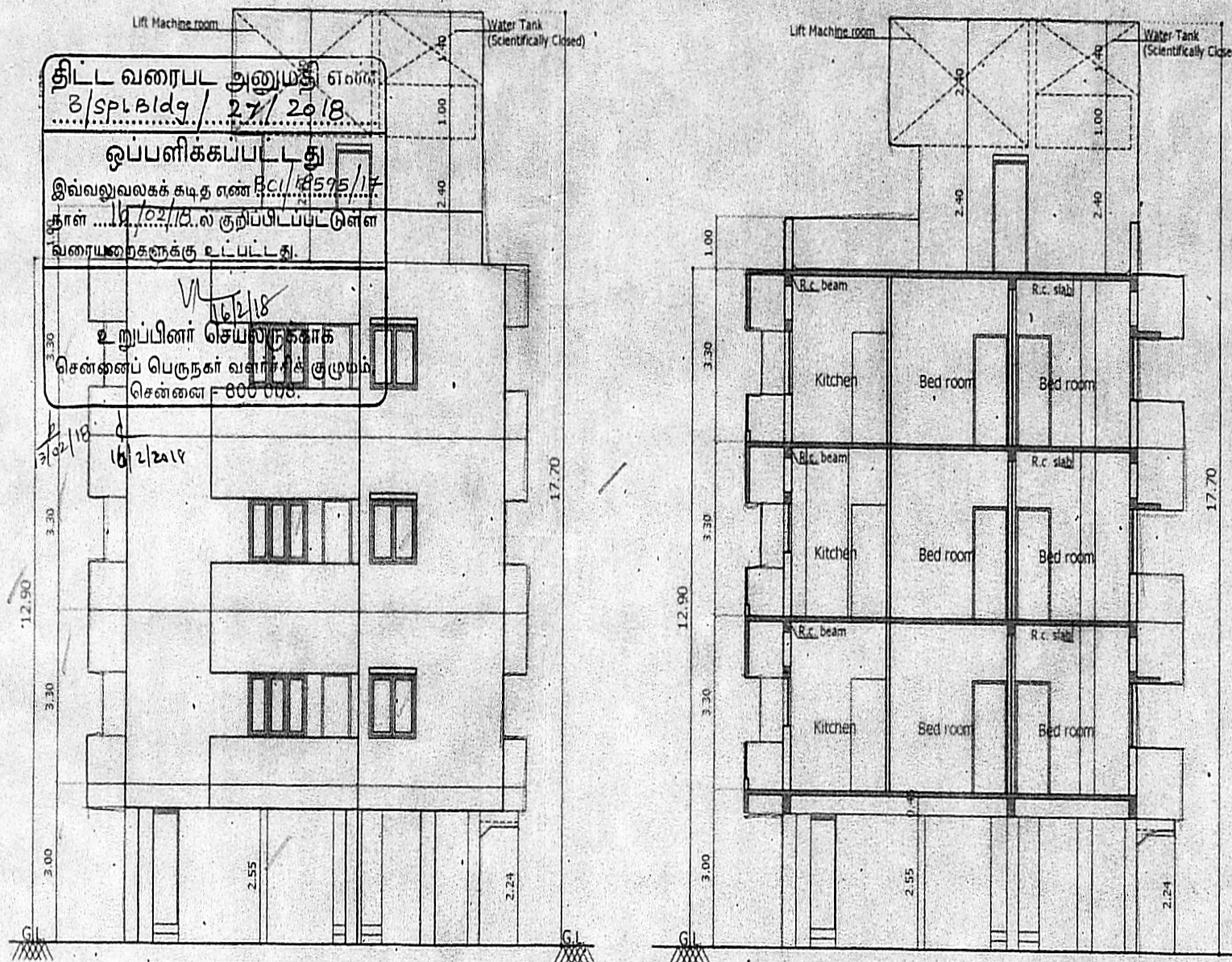


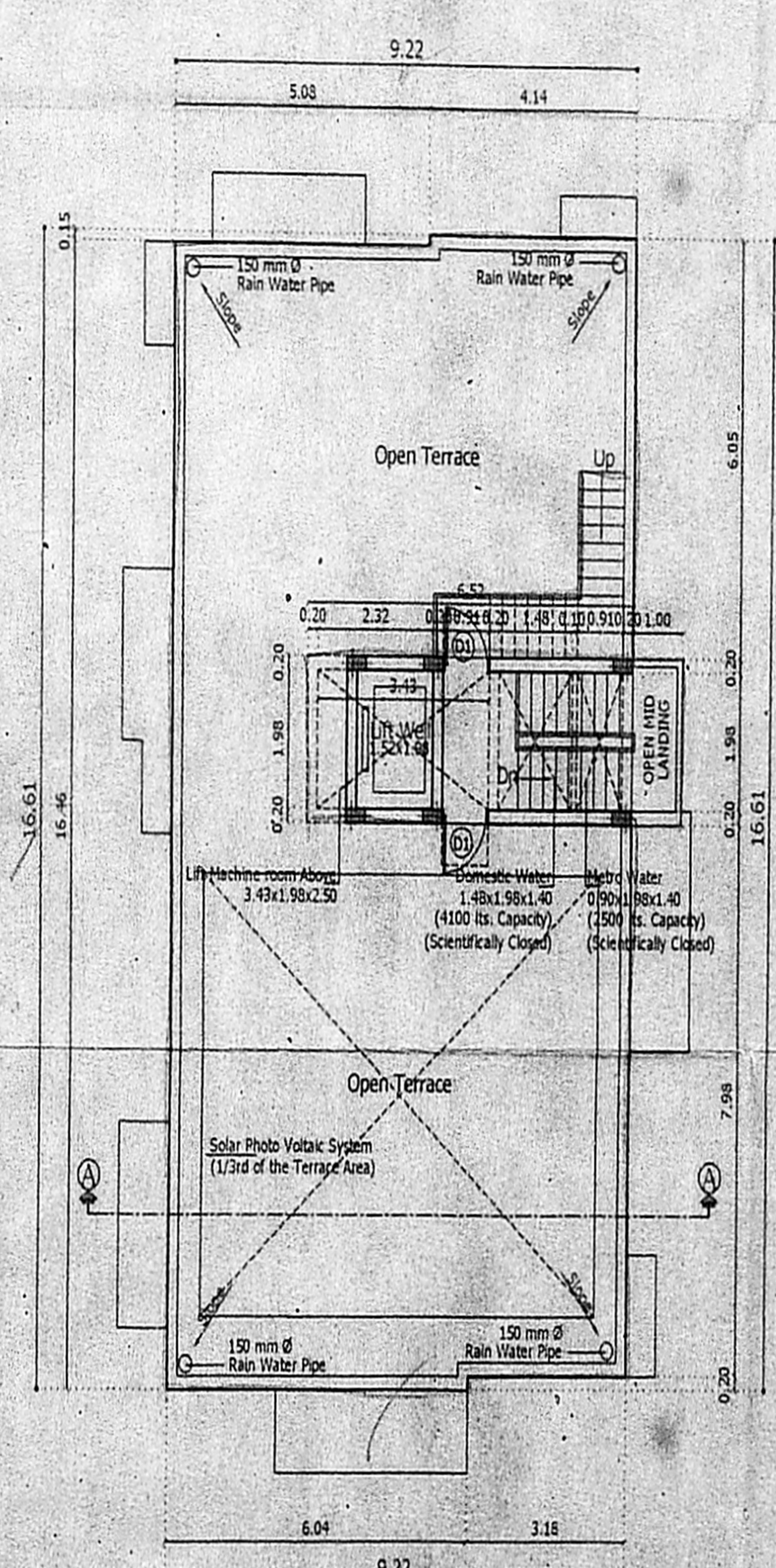
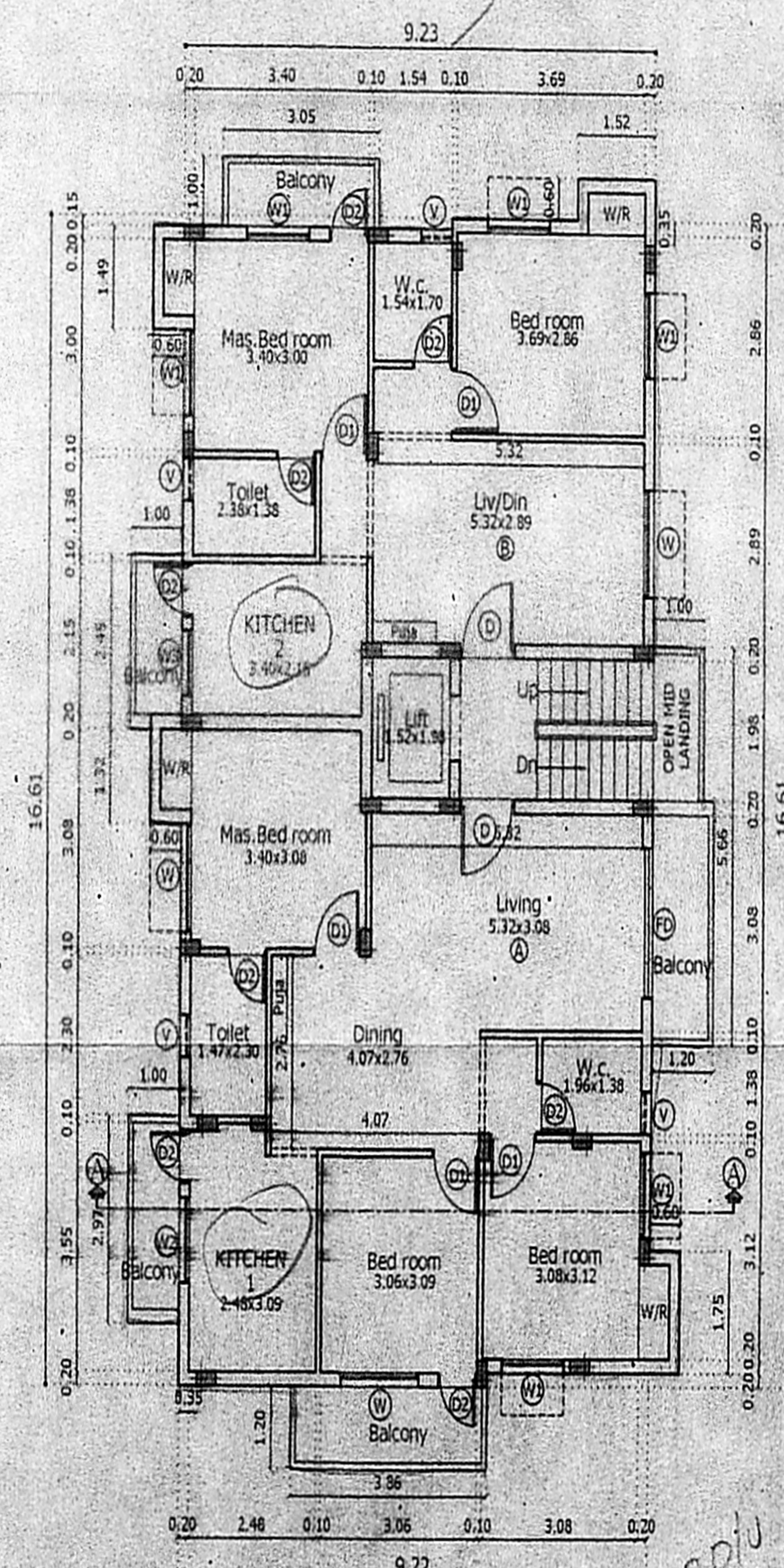
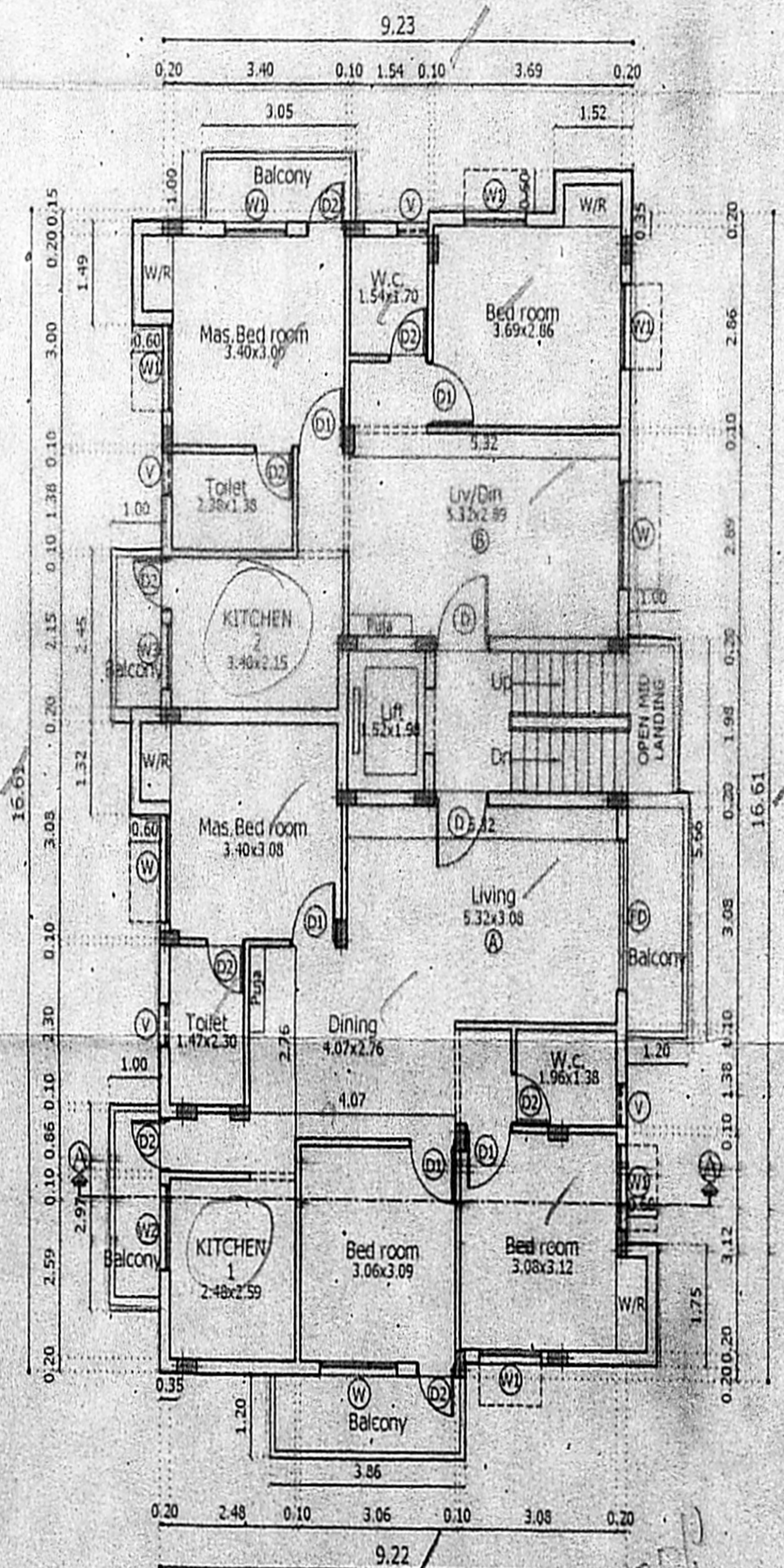
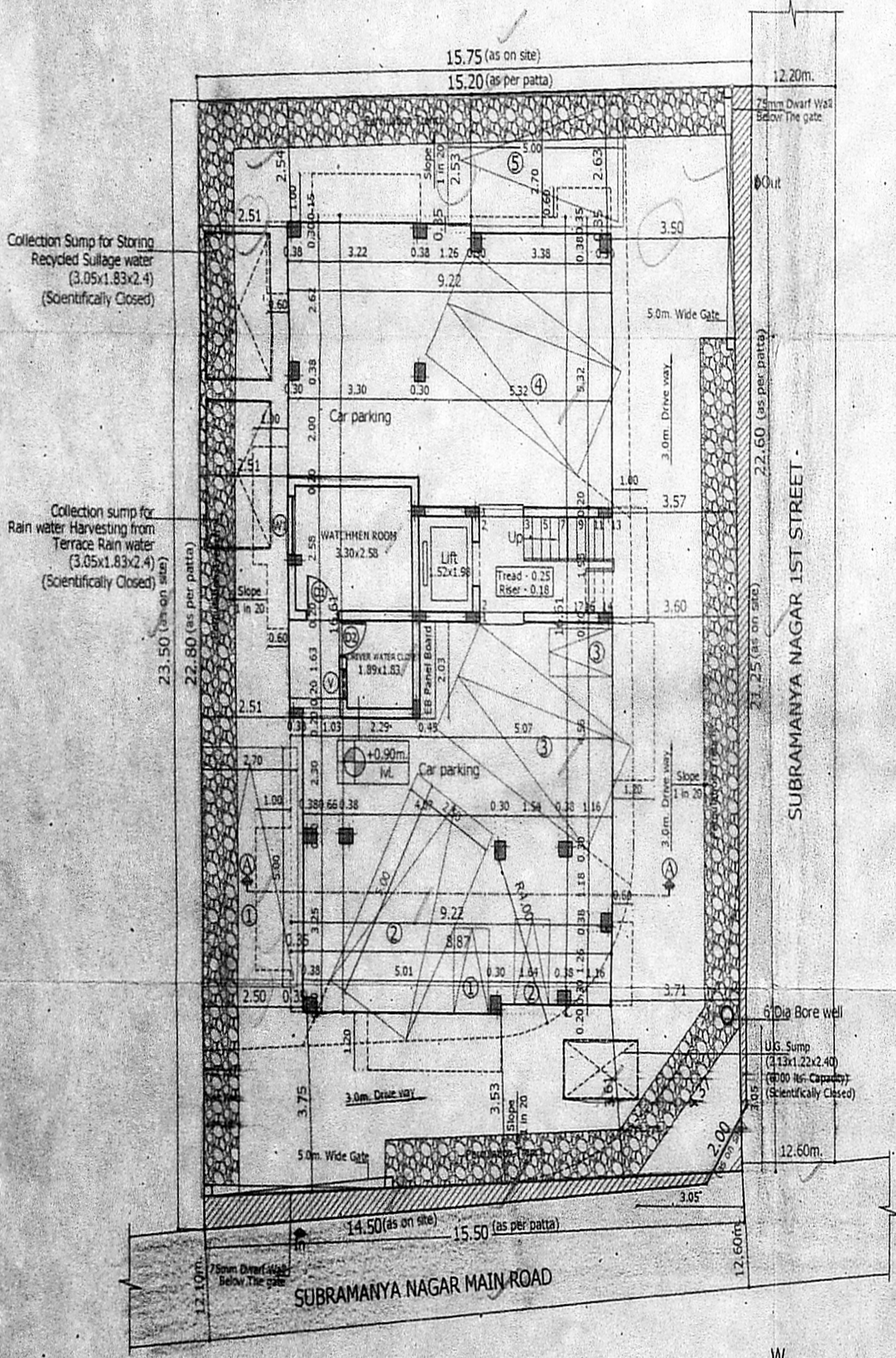
அலுவலகப் படம்



Elevation

Section - "A - A"

Detail of Percolation Trench



Typical Floor Plan (First & Third Floor)

Second Floor Plan

Terrace Floor Plan

SCHEDULE OF JOINERY

Sl. No.	DESCRIPTION	QTY	UNIT
D	T.W PANEL DOOR	2.13	SQ.M
D1	C.W PANEL DOOR	2.13	SQ.M
D2	C.W FLUSH DOOR	2.13	SQ.M
FD	T.W FRENCH DOOR	2.13	SQ.M
W	TYPIC GLAZED WINDOW	1.22	SQ.M
W1	TYPIC GLAZED WINDOW	1.22	SQ.M
W2	UPVC GLAZED WINDOW	1.22	SQ.M
W3	UPVC GLAZED WINDOW	1.22	SQ.M
V	UPVC GLAZED VENTILATOR	0.51	SQ.M

SPECIFICATION

1. P.C.C IN 1:4:8  
 2. R.C.C IN 1:1:4  
 3. R.C.C IN 1:1:4 WITH 5% SPORE  
 4. 10MM Ø STEEL BAR IN C.C/W  
 5. 12MM Ø STEEL BAR IN C.C/W  
 6. 16MM Ø STEEL BAR IN C.C/W  
 7. 20MM Ø STEEL BAR IN C.C/W  
 8. 25MM Ø STEEL BAR IN C.C/W  
 9. 30MM Ø STEEL BAR IN C.C/W  
 10. 35MM Ø STEEL BAR IN C.C/W  
 11. 40MM Ø STEEL BAR IN C.C/W  
 12. 45MM Ø STEEL BAR IN C.C/W  
 13. 50MM Ø STEEL BAR IN C.C/W  
 14. 55MM Ø STEEL BAR IN C.C/W  
 15. 60MM Ø STEEL BAR IN C.C/W  
 16. 65MM Ø STEEL BAR IN C.C/W  
 17. 70MM Ø STEEL BAR IN C.C/W  
 18. 75MM Ø STEEL BAR IN C.C/W  
 19. 80MM Ø STEEL BAR IN C.C/W  
 20. 85MM Ø STEEL BAR IN C.C/W  
 21. 90MM Ø STEEL BAR IN C.C/W  
 22. 95MM Ø STEEL BAR IN C.C/W  
 23. 100MM Ø STEEL BAR IN C.C/W  
 24. 105MM Ø STEEL BAR IN C.C/W  
 25. 110MM Ø STEEL BAR IN C.C/W  
 26. 115MM Ø STEEL BAR IN C.C/W  
 27. 120MM Ø STEEL BAR IN C.C/W  
 28. 125MM Ø STEEL BAR IN C.C/W  
 29. 130MM Ø STEEL BAR IN C.C/W  
 30. 135MM Ø STEEL BAR IN C.C/W  
 31. 140MM Ø STEEL BAR IN C.C/W  
 32. 145MM Ø STEEL BAR IN C.C/W  
 33. 150MM Ø STEEL BAR IN C.C/W  
 34. 155MM Ø STEEL BAR IN C.C/W  
 35. 160MM Ø STEEL BAR IN C.C/W  
 36. 165MM Ø STEEL BAR IN C.C/W  
 37. 170MM Ø STEEL BAR IN C.C/W  
 38. 175MM Ø STEEL BAR IN C.C/W  
 39. 180MM Ø STEEL BAR IN C.C/W  
 40. 185MM Ø STEEL BAR IN C.C/W  
 41. 190MM Ø STEEL BAR IN C.C/W  
 42. 195MM Ø STEEL BAR IN C.C/W  
 43. 200MM Ø STEEL BAR IN C.C/W  
 44. 205MM Ø STEEL BAR IN C.C/W  
 45. 210MM Ø STEEL BAR IN C.C/W  
 46. 215MM Ø STEEL BAR IN C.C/W  
 47. 220MM Ø STEEL BAR IN C.C/W  
 48. 225MM Ø STEEL BAR IN C.C/W  
 49. 230MM Ø STEEL BAR IN C.C/W  
 50. 235MM Ø STEEL BAR IN C.C/W  
 51. 240MM Ø STEEL BAR IN C.C/W  
 52. 245MM Ø STEEL BAR IN C.C/W  
 53. 250MM Ø STEEL BAR IN C.C/W  
 54. 255MM Ø STEEL BAR IN C.C/W  
 55. 260MM Ø STEEL BAR IN C.C/W  
 56. 265MM Ø STEEL BAR IN C.C/W  
 57. 270MM Ø STEEL BAR IN C.C/W  
 58. 275MM Ø STEEL BAR IN C.C/W  
 59. 280MM Ø STEEL BAR IN C.C/W  
 60. 285MM Ø STEEL BAR IN C.C/W  
 61. 290MM Ø STEEL BAR IN C.C/W  
 62. 295MM Ø STEEL BAR IN C.C/W  
 63. 300MM Ø STEEL BAR IN C.C/W  
 64. 305MM Ø STEEL BAR IN C.C/W  
 65. 310MM Ø STEEL BAR IN C.C/W  
 66. 315MM Ø STEEL BAR IN C.C/W  
 67. 320MM Ø STEEL BAR IN C.C/W  
 68. 325MM Ø STEEL BAR IN C.C/W  
 69. 330MM Ø STEEL BAR IN C.C/W  
 70. 335MM Ø STEEL BAR IN C.C/W  
 71. 340MM Ø STEEL BAR IN C.C/W  
 72. 345MM Ø STEEL BAR IN C.C/W  
 73. 350MM Ø STEEL BAR IN C.C/W  
 74. 355MM Ø STEEL BAR IN C.C/W  
 75. 360MM Ø STEEL BAR IN C.C/W  
 76. 365MM Ø STEEL BAR IN C.C/W  
 77. 370MM Ø STEEL BAR IN C.C/W  
 78. 375MM Ø STEEL BAR IN C.C/W  
 79. 380MM Ø STEEL BAR IN C.C/W  
 80. 385MM Ø STEEL BAR IN C.C/W  
 81. 390MM Ø STEEL BAR IN C.C/W  
 82. 395MM Ø STEEL BAR IN C.C/W  
 83. 400MM Ø STEEL BAR IN C.C/W  
 84. 405MM Ø STEEL BAR IN C.C/W  
 85. 410MM Ø STEEL BAR IN C.C/W  
 86. 415MM Ø STEEL BAR IN C.C/W  
 87. 420MM Ø STEEL BAR IN C.C/W  
 88. 425MM Ø STEEL BAR IN C.C/W  
 89. 430MM Ø STEEL BAR IN C.C/W  
 90. 435MM Ø STEEL BAR IN C.C/W  
 91. 440MM Ø STEEL BAR IN C.C/W  
 92. 445MM Ø STEEL BAR IN C.C/W  
 93. 450MM Ø STEEL BAR IN C.C/W  
 94. 455MM Ø STEEL BAR IN C.C/W  
 95. 460MM Ø STEEL BAR IN C.C/W  
 96. 465MM Ø STEEL BAR IN C.C/W  
 97. 470MM Ø STEEL BAR IN C.C/W  
 98. 475MM Ø STEEL BAR IN C.C/W  
 99. 480MM Ø STEEL BAR IN C.C/W  
 100. 485MM Ø STEEL BAR IN C.C/W  
 101. 490MM Ø STEEL BAR IN C.C/W  
 102. 495MM Ø STEEL BAR IN C.C/W  
 103. 500MM Ø STEEL BAR IN C.C/W  
 104. 505MM Ø STEEL BAR IN C.C/W  
 105. 510MM Ø STEEL BAR IN C.C/W  
 106. 515MM Ø STEEL BAR IN C.C/W  
 107. 520MM Ø STEEL BAR IN C.C/W  
 108. 525MM Ø STEEL BAR IN C.C/W  
 109. 530MM Ø STEEL BAR IN C.C/W  
 110. 535MM Ø STEEL BAR IN C.C/W  
 111. 540MM Ø STEEL BAR IN C.C/W  
 112. 545MM Ø STEEL BAR IN C.C/W  
 113. 550MM Ø STEEL BAR IN C.C/W  
 114. 555MM Ø STEEL BAR IN C.C/W  
 115. 560MM Ø STEEL BAR IN C.C/W  
 116. 565MM Ø STEEL BAR IN C.C/W  
 117. 570MM Ø STEEL BAR IN C.C/W  
 118. 575MM Ø STEEL BAR IN C.C/W  
 119. 580MM Ø STEEL BAR IN C.C/W  
 120. 585MM Ø STEEL BAR IN C.C/W  
 121. 590MM Ø STEEL BAR IN C.C/W  
 122. 595MM Ø STEEL BAR IN C.C/W  
 123. 600MM Ø STEEL BAR IN C.C/W  
 124. 605MM Ø STEEL BAR IN C.C/W  
 125. 610MM Ø STEEL BAR IN C.C/W  
 126. 615MM Ø STEEL BAR IN C.C/W  
 127. 620MM Ø STEEL BAR IN C.C/W  
 128. 625MM Ø STEEL BAR IN C.C/W  
 129. 630MM Ø STEEL BAR IN C.C/W  
 130. 635MM Ø STEEL BAR IN C.C/W  
 131. 640MM Ø STEEL BAR IN C.C/W  
 132. 645MM Ø STEEL BAR IN C.C/W  
 133. 650MM Ø STEEL BAR IN C.C/W  
 134. 655MM Ø STEEL BAR IN C.C/W  
 135. 660MM Ø STEEL BAR IN C.C/W  
 136. 665MM Ø STEEL BAR IN C.C/W  
 137. 670MM Ø STEEL BAR IN C.C/W  
 138. 675MM Ø STEEL BAR IN C.C/W  
 139. 680MM Ø STEEL BAR IN C.C/W  
 140. 685MM Ø STEEL BAR IN C.C/W  
 141. 690MM Ø STEEL BAR IN C.C/W  
 142. 695MM Ø STEEL BAR IN C.C/W  
 143. 700MM Ø STEEL BAR IN C.C/W  
 144. 705MM Ø STEEL BAR IN C.C/W  
 145. 710MM Ø STEEL BAR IN C.C/W  
 146. 715MM Ø STEEL BAR IN C.C/W  
 147. 720MM Ø STEEL BAR IN C.C/W  
 148. 725MM Ø STEEL BAR IN C.C/W  
 149. 730MM Ø STEEL BAR IN C.C/W  
 150. 735MM Ø STEEL BAR IN C.C/W  
 151. 740MM Ø STEEL BAR IN C.C/W  
 152. 745MM Ø STEEL BAR IN C.C/W  
 153. 750MM Ø STEEL BAR IN C.C/W  
 154. 755MM Ø STEEL BAR IN C.C/W  
 155. 760MM Ø STEEL BAR IN C.C/W  
 156. 765MM Ø STEEL BAR IN C.C/W  
 157. 770MM Ø STEEL BAR IN C.C/W  
 158. 775MM Ø STEEL BAR IN C.C/W  
 159. 780MM Ø STEEL BAR IN C.C/W  
 160. 785MM Ø STEEL BAR IN C.C/W  
 161. 790MM Ø STEEL BAR IN C.C/W  
 162. 795MM Ø STEEL BAR IN C.C/W  
 163. 800MM Ø STEEL BAR IN C.C/W  
 164. 805MM Ø STEEL BAR IN C.C/W  
 165. 810MM Ø STEEL BAR IN C.C/W  
 166. 815MM Ø STEEL BAR IN C.C/W  
 167. 820MM Ø STEEL BAR IN C.C/W  
 168. 825MM Ø STEEL BAR IN C.C/W  
 169. 830MM Ø STEEL BAR IN C.C/W  
 170. 835MM Ø STEEL BAR IN C.C/W  
 171. 840MM Ø STEEL BAR IN C.C/W  
 172. 845MM Ø STEEL BAR IN C.C/W  
 173. 850MM Ø STEEL BAR IN C.C/W  
 174. 855MM Ø STEEL BAR IN C.C/W  
 175. 860MM Ø STEEL BAR IN C.C/W  
 176. 865MM Ø STEEL BAR IN C.C/W  
 177. 870MM Ø STEEL BAR IN C.C/W  
 178. 875MM Ø STEEL BAR IN C.C/W  
 179. 880MM Ø STEEL BAR IN C.C/W  
 180. 885MM Ø STEEL BAR IN C.C/W  
 181. 890MM Ø STEEL BAR IN C.C/W  
 182. 895MM Ø STEEL BAR IN C.C/W  
 183. 900MM Ø STEEL BAR IN C.C/W  
 184. 905MM Ø STEEL BAR IN C.C/W  
 185. 910MM Ø STEEL BAR IN C.C/W  
 186. 915MM Ø STEEL BAR IN C.C/W  
 187. 920MM Ø STEEL BAR IN C.C/W  
 188. 925MM Ø STEEL BAR IN C.C/W  
 189. 930MM Ø STEEL BAR IN C.C/W  
 190. 935MM Ø STEEL BAR IN C.C/W  
 191. 940MM Ø STEEL BAR IN C.C/W  
 192. 945MM Ø STEEL BAR IN C.C/W  
 193. 950MM Ø STEEL BAR IN C.C/W  
 194. 955MM Ø STEEL BAR IN C.C/W  
 195. 960MM Ø STEEL BAR IN C.C/W  
 196. 965MM Ø STEEL BAR IN C.C/W  
 197. 970MM Ø STEEL BAR IN C.C/W  
 198. 975MM Ø STEEL BAR IN C.C/W  
 199. 980MM Ø STEEL BAR IN C.C/W  
 200. 985MM Ø STEEL BAR IN C.C/W  
 201. 990MM Ø STEEL BAR IN C.C/W  
 202. 995MM Ø STEEL BAR IN C.C/W  
 203. 1000MM Ø STEEL BAR IN C.C/W

AREA STATEMENT

DESCRIPTION	AREA (SQ.M)
PLOT EXTENT	349.00
AS PER PATTA	349.00
AS PER DOCUMENT	349.49
SUPERIMPOSED (LEAST)	347.80
Floor	FSI Area
FIRST FLOOR	163.73
SECOND FLOOR	163.73
THIRD FLOOR	163.73
TOTAL BUILTUP AREA	491.19
F.S.I. = 491.19 / 347.80	= 1.412

LEGEND

PROPOSED CONSTRUCTION  
 BOUNDARY LINE  
 ROADS

JOB TITLE  
 PLAN SHOWING THE PROPOSED RESIDENTIAL APARTMENTS AT PLOT No. : 49, DOOR No.4, SUBRAMANYA NAGAR MAIN ROAD, SUBRAMANYA NAGAR, RANGARAJAPURAM, CHENNAI - 600 024, COMPRISED IN T. S. No. : 14/54 (AS PER PATTA), S. No. : 24/2 (AS PER DOC), BLOCK No. - 49, PULIYUR VILLAGE, EGMORE - TALUK, CHENNAI DISTRICT, GREATER CHENNAI CORPORATION, DIVISION No. : 134, ZONE - 10.

SCALE: 1:100

POWER AGENT :

LICENSED SURVEYOR  
 V. SRINIVASAN, AIA  
 Registered Architect - CA/76/19753  
 Licensed Surveyor - Corporation of Chennai  
 RA No. 344  
 Firm Address: P/17/1, 17th Great Anna Nagar, Chennai-600 040 Ph: 2678 4527